

# POWER-SPREAD

pro<sup>+</sup>

QUALITY. STABILITY. FLEXIBILITY.

**HB BRANTNER**



**HANS BRANTNER & SOHN  
FAHRZEUGBAUGESELLSCHAFT  
TA 24078 POWER-SPREAD PRO MIT  
CSP2-2-UNIVERSALSTREUWERK**

✓ **Verteilqualität Stallmist**

DLG-Prüfbericht 7564





# THE PROFESSIONAL

## Professional Spreader

The extensive experience in spreader mechanism development, the robust construction of the spreading components, and the use of top-quality materials make the BRANTNER CSP2-2 spread unit a perfect tool for applying all types of spreading materials. From manure and compost to lime - it delivers a perfect spreading pattern in every application.



### HANDLES EVERYTHING

- Spread unit from in-house production
- Spreading discs Ø 1.000 mm with 6 adjustable spreading vanes
- Main drive train with a 45 mm drive shaft
- Continuous conveyor chain shaft Ø 65 mm made of high-strength steel
- Frame longitudinal beams made from double-C press profiles.
- Excellent corrosion protection thanks to KTL powder coating surface technology



6-star chain wheel for reduced wear on the floor conveyor chain



Stabilizer sidewalls bolted to the frame in two directions



Spreading discs made of 10 mm Hardox with 6 adjustable spreading blades



# Spread Unit

2 milling rollers with a diameter of 650 mm

## Additional spreader equipment

- 01 Cardan drive
- 02 Automatic roller chain lubrication (only with chain drive)
- 03 Spreading limiter, also retrofittable
- 04 Rubber seal on retaining door



## Special features



CSP2-2 Compost Spreader Professional, made in-house. **100 % Made in Austria**



2 spreading discs with a diameter of 1000 mm and 6 adjustable spreading vanes



Chain drive of the lower milling drum with 1-inch duplex chain and the upper milling drum with 5/4-inch chain



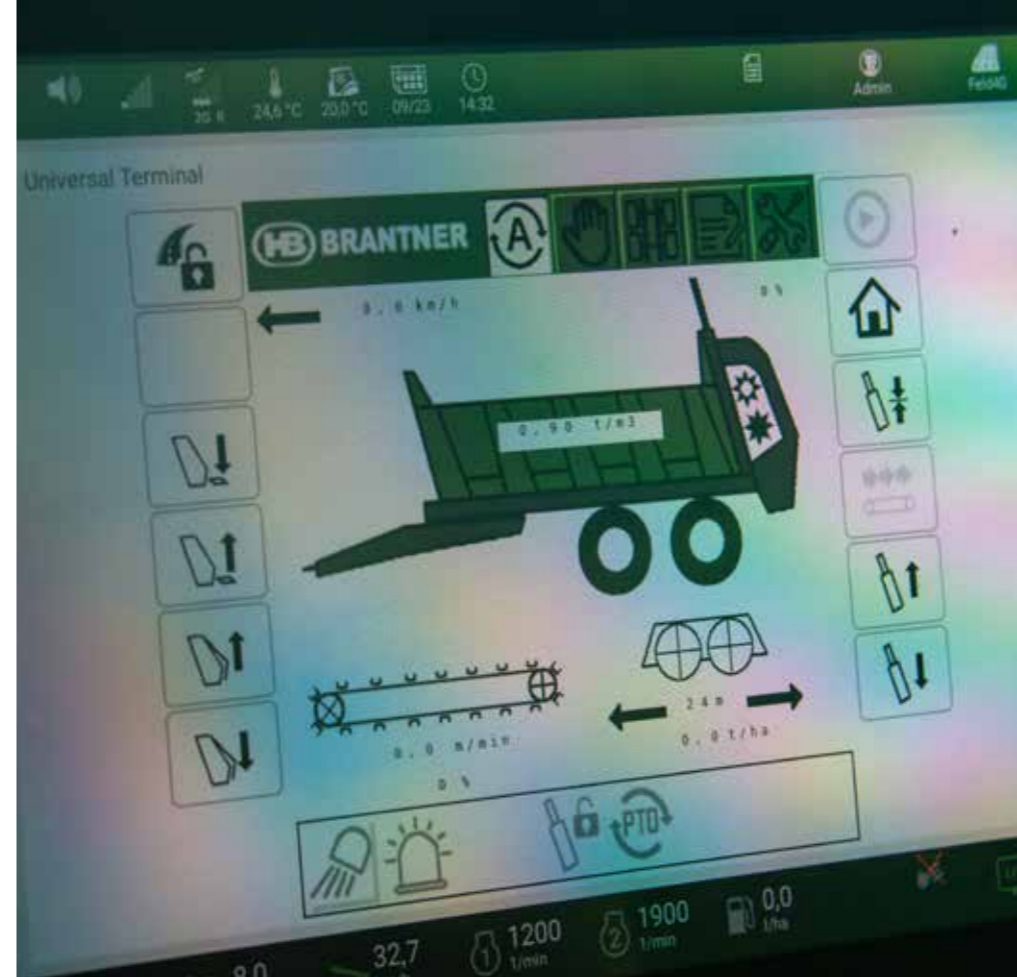
Hydraulic cover hood with plastic wear plates



Horizontally and vertically adjustable foreign body flap



# Control



Control panel with a functional user interface

The ISOBUS control system enables even more convenient operation of the professional spreader in daily use. All necessary information and control options are visible at a glance on the tractor control panel.

As standard, the spreaders of the type PSP+ are equipped with an LS (Load Sensing) hydraulic block. In addition to the infinitely adjustable control of the moving floor, the functions for the storage wall, cover hood, and (if available) the spreading limiter device are also controlled.



Electronic control unit

If the exact density of the spreading material is unknown, the weighing system is a useful tool for calibrating the automated output quantity control. In this case, the scale is directly linked to the ISOBUS control system. The control system then compares the theoretically applied amount of material with the actual amount applied. If a deviation occurs, the moving floor speed is automatically adjusted.



# Weighing system



In addition to the automated output quantity control, the control also offers other features for process control, where multiple hydraulic and electrical functions are automatically executed in sequence. This provides the Brantner ISOBUS control with maximum comfort and the highest operational efficiency.

# ISOBUS control system

The Stabilator structure impresses with its robust construction. Angled walls with a smooth interior surface provide more loading volume and facilitate unloading. Ideal for demanding applications. The standard frame height is 1.200 mm.

## Body

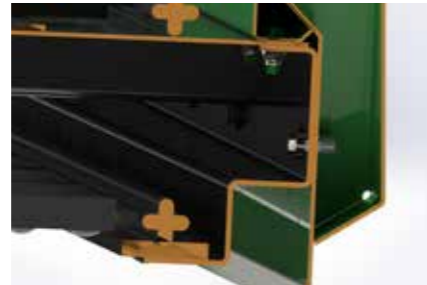


Round steel chain (14x50 mm), breaking load of 24.6 t per chain strand, moving floor bar made of high-strength U-steel (60x30x6 mm), bolted to the chain

## Moving floor



**Attachment boards**  
Our attachment boards are available in heights of 400-600 mm



**Bolted side walls**  
screwed to the frame in two directions



**Absolutely smooth**  
trough structure conical towards the rear for easier unloading



**Moving floor drive**  
hydraulically powered via oil bath gear and hydraulic overload protection



**Chain strands**  
with flat link chain instead of round steel chain (optional)



**Chain tensioner**  
spring-loaded with indicator on the front wall



**Protection edge**  
During loading, the loading sill is protected from damage by a plastic wear strip



**Storage wall**  
Better utilization of loading volume and a perfect spreading pattern from the start



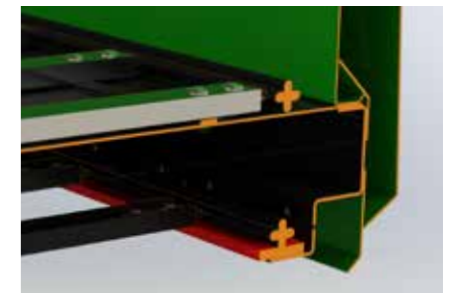
**Storage wall display**  
on the front wall with concealed cable guide, protecting against dirt buildup and malfunctions



**6-star chain wheel**  
from Brantner for reduced wear (chain angle of approximately 30°) on the floor conveyor chain



**5-star chain wheel**  
used by many competitors (chain angle of approximately 36°)



**chain returns**  
runs on plastic slide rails, reducing wear on the frame and the floor conveyor chain



# Chassis

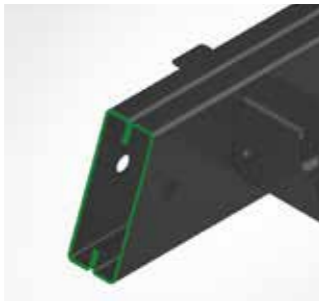
The chassis frame is made of a closed double-C-frame for maximum torsional stability, bending strength, and excellent twisting properties.

The axle frame is doubly bolted both inside and outside, making replacement easy.

The front drive shaft is integrated into the drawbar, ensuring optimal alignment of the PTO shaft at all times.

The hitch height is infinitely adjustable as standard via spindles and can be used for both top or bottom hitching with a 180° rotation.

Retrofitting with a hydraulically suspended drawbar is possible.



**Double-C-frame**



**Multipoint bolted axle frame**



**Coupling height adjustable via spindles**



**Integrated drive shaft**



**Top and bottom hitching**



**Optional hydraulically suspended drawbar**



**32-ton suspension unit with reinforced balancing rocker**

The absolute top model in the professional segment. Excellent suspension performance that protects the load and the vehicle from impacts and shocks.

# Suspension



**Suspension stabilizer highly recommended for steering axle (only possible with leaf spring suspension)**



**Offset tandem suspension unit adapted for the steering axle, providing better stability and reducing roll tendency**



**Hydraulic suspension for maximum cornering and slope stability**



**HP Premium control system for lift axle, start assist, etc.**

## Technical specifications

Modelle	Power-Spread pro+		
	TA 18060	TA 20069	TA 24078
Total weight	18.000-21.000 kg	20.500-24.000 kg	24.000 kg
Dead weight	9.000 kg	9.500 kg	10.500 kg
Support load	2.000-3.000 kg	2.500-4.000 kg	4.000 kg
Total length	8.980 mm	9.880 mm	10.780 mm
Total width	2.550 mm	2.550 mm	2.850 mm
Loading height	2.750 mm	2.750 mm	2.850 mm
Platform size	4.900 x 1.980/2.070 mm	5.800 x 1.980/2.070 mm	6.700 x 1.980/2.070 mm
Sideboard height	1.200 mm	1.200 mm	1.200 mm
Loading capacity / with attachment board	11,9 m <sup>3</sup> attachment board 500 16,9 m <sup>3</sup>	14,1 m <sup>3</sup> attachment board 600 21,1 m <sup>3</sup>	16,3 m <sup>3</sup> attachment board 600 24,4 m <sup>3</sup>
Spreading unit as standard		CSP2-2 mit Chain drive	
Spreading unit optional		CSP2-2 mit Cardan drive	
Clearance height as standard	1.550 mm	1.550 mm	1.550 mm
Square axle	120 mm	150 mm	150 mm
Track	2.000 mm	2.000 mm	2.100 mm
Support	Support winch	Support winch	Support winch
Power requirement	90 kW	110 kW	140 kW

## Additional equipment



- 01 Spreading limiter
- 02 LED work lights package
- 03 Bottom hitching
- 04 Electric central lubrication system
- 05 ISOBUS control system
- 06 Load counter including operating hours counter
- 07 Hydraulic support leg
- 08 Hydraulically sprung drawbar
- 09 Automatic roller chain lubrication
- 10 Attachment board
- 11 Steering axle
- 12 Flange tow eye K80

## Contact

### ZENTRALE

#### HANS BRANTNER & SOHN Fahrzeugbau GesmbH

KR Hans Brantner-Straße 8  
 2136 Laa an der Thaya  
 T +43 (0) 2522 2511-0  
 F +43 (0) 2522 2511-50  
 fahrzeugbau@hb-brantner.at  
 www.hb-brantner.at

# Surface technology. Cathodic dip painting & Powder.

### THE ADVANTAGES AT A GLANCE

- excellent corrosion protection outside and inside
- improved mechanical resilience
- environmentally friendly technology through powder circulation system
- Coverage of energy needs by 2 megawatt photovoltaic system

Products that are permanently exposed to extreme conditions require the highest paint quality with excellent corrosion protection. Together with the paint specialist Helios, we have equipped our surface technology system with the latest technology. With this modernization, we can further improve our product quality and at the same time rely on environmentally friendly process technology.



#### QUALITY.

State-of-the-art manufacturing process with Laser cutting centres, robot welding systems, "high-end" surface technology, line assembly as well as several quality controls and the final test on the brake test stand ensure the highest product quality.

#### FLEXIBILITY.

The outstanding quality and the individual production according to customer requirements make every product from BRANTNER Fahrzeugbau a unique specimen that sets standards.

#### STABILITY.

The stability of the product guarantees stability in value retention. And that over decades!

## Values across borders.



### THIS IS HOW KTL POWDER-QUALITY IS CREATED.

- automated granulate blasting
- automatic wet-chemical cleaning
- Cathodic dip painting (KTL)
- Tumble dry at 160 - 180 degrees
- automated POWDER COATING
- Tumble dry at 160 - 180 degrees



**Blasting**  
 mechanical pre-treatment for clean and homogeneous surfaces



**KTL & pretreatment**  
 12 immersion processes for chemical cleaning and subsequent KTL coating



**Powder**  
 automatic powder coating



VEHICLE CONSTRUCTION

HALL CONSTRUCTION

STEEL CONSTRUCTION

SURFACE TECHNOLOGY

QUALITY. STABILITY. FLEXIBILITY.