

HB BRANTNER

Quality. Stability. Flexibility.



” Perfectly.
The BRANTNER range offers
everything I need for my daily
tasks.

Inhaltsverzeichnis

Company	04 - 05
Production	06 - 07
Four reasons for BRANTNER	08 - 09
Single-axle tipper	10 - 15
Tandem-axle tipper	16 - 21
Tandem-axle lowloader	22 - 25
Platform trailer	26 - 31
Push-off dumper POWER-PUSH plus ⁺	32 - 39
Two-axle tipper	40 - 45
Three- and Four-axle tipper	46 - 47
Dumper POWER-TUBE	48 - 53
Halfpipe & X-POWER-TUBE	54 - 59
Hook lift	60 - 61
Multiplex	62 - 63
Stabilator	64 - 65
Special equipment	66 - 69

Quality from
Austria for
75 years.

- 100 % family owned company
- 100 % production in Austria
- From forge to industrial operation,
always with a focus on quality
- Investment in state-of-the-art equip-
ment (surface coating technology and
robot-welding)



One company Many trailer

Only if you produce a product yourself, you can ensure outstanding quality. For more than 75 years, we at Brantner have been working according to this principle and are proud to be able to set standards again and again. In keeping with tradition, the 8th generation of the Brantner family runs 100% as a family business to ensure the continuity of quality, experience and diversity.

75 years
experience

Nº 1

in western Europe

125 thousand

produced trailers

Thought out down to the last detail



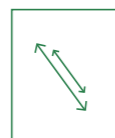
We.
For you.

Stability through innovation
and diversity.

HB BRANTNER

**HB BRANTNER
HALLENBAU**

**HB BRANTNER
OBERFLÄCHENTECHNIK**



Flexibility

Our outstanding quality and the individual production according to customer wishes make every product from BRANTNER unique, setting standards throughout Europe.



Quality

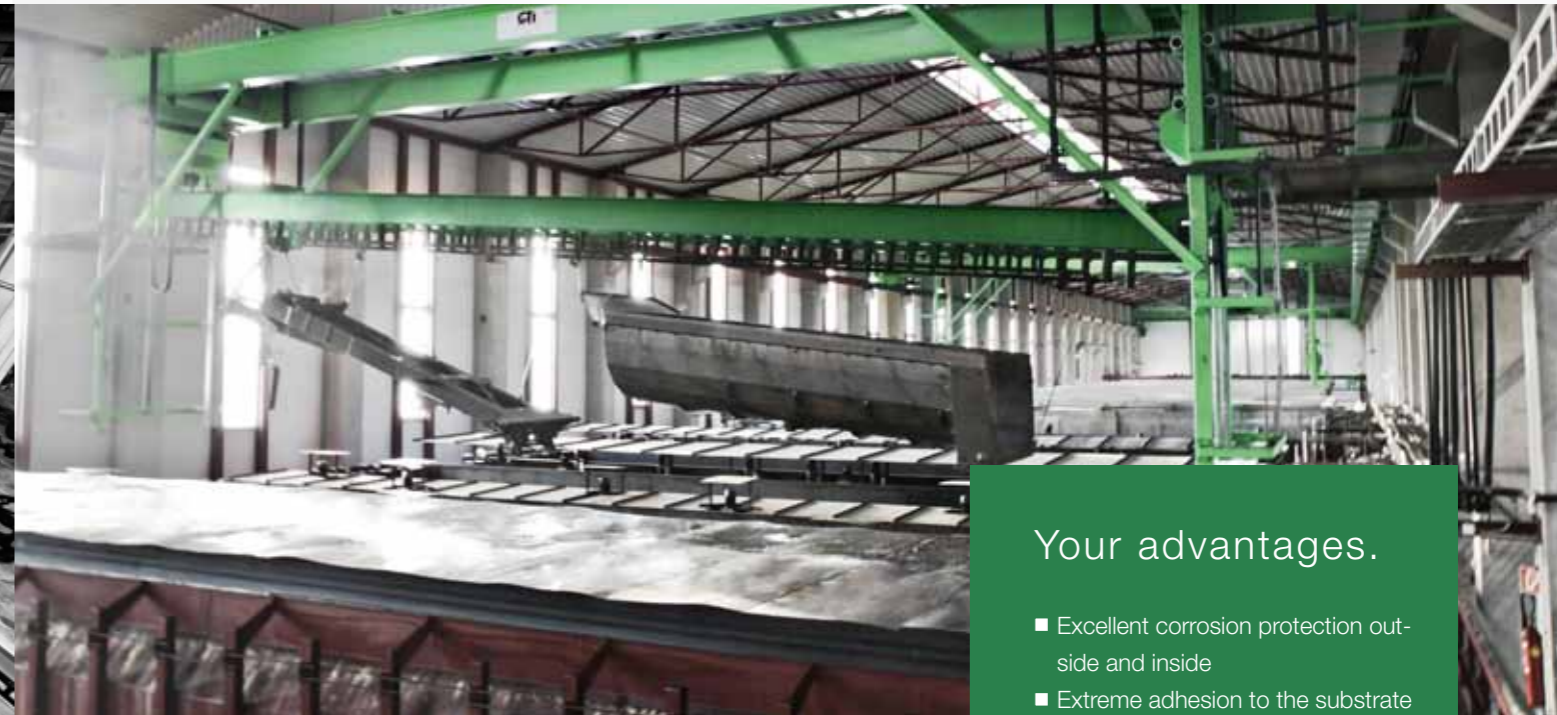
Laser cutting centers and robot welding systems are the focus of our modern manufacturing process. Cold pressing with a total pressure of 4,000 t and the final ACC surface technology ensure the highest product quality.



Stability

We define "stability" in production through continuous innovation. We are also stable when it comes to uncompromising use thanks to features such as increased tilting bearing clearance and torsionally rigid double-C press profile frame.

ACC-surface coating technology



Your advantages.

- Excellent corrosion protection outside and inside
- Extreme adhesion to the substrate
- Optimal cavity protection



Cleaning

In the case of ACC surface technology, great importance is attached to the cleaning of the metal surfaces. Contaminants such as oils, greases, rust, dust, etc. are removed by granular blasting with an automatic continuous blasting system and wet-chemical cleaning.



ACC

After cleaning, the surface technology is carried out in 3 steps: In the 1st ACC basin, the ACC emulsion is applied, in the 2nd ACC basin excesses are rinsed off and the 3rd ACC basin (reaction rinse) is the chemical preparation for drying.



Drying

The drying of the ACC coating takes place at approx. 100 ° C in hot air ovens. The rapid heating causes the polymer chains of the emulsion to align and produce a uniform surface and adhere well to the substrate.



Painting

The coated parts are temporarily stored in the cooling zone and then painted in the BRANTNER design or according to your personal request.

Four reasons for a BRANTNER-tipper

01 Value stability

The high resale value of our BRANTNER tipper speaks for itself!

02 Quality advantage through experience

75 years of industry expertise and over 125,000 vehicles produced. This is unique!

03 The trailer specialist

We focus 100% on the construction of tippers, push-off vehicles and special trailers.

04 Technology lead

State-of-the-art design and manufacturing processes ensure our lead: from finite element analysis on the 3D model for an optimal design to production with laser cutting systems, robot-welding or the fully automated coating system.



Reliable.

State-of-the-art production techniques ensure the quality BRANTNER stands for.

The Allrounder.

Small, agile, reliable and stable in value - the model variety of the single-axle tipper has the right trailer for every use.

Single-axle tipper

Whether wood, grain, livestock, leaves or other - the single-axle dumper copes with it. A large number of design variants and additional features make it possible to have a trailer tailored to each individual customer. Due to its convincing maneuverability and a maximum total weight of 2.5 to 10 tons, the single-axle tipper is the right choice for transport in narrow spaces.

01 E 6040

500 mm steel sideboards and 500 mm steel attachment boards
overrun brake with automatic return drive

02 E 4530

5 mm chassis frame made of profiles and 400 mm steel sideboards

03 E 6030

4 or 5 mm steel plate platform folded to all four sides (self-cleaning)

04 E 6035 / E 6535 EURO-LINE

steel plate platform canted at right angles made of one piece



BRANTNER- Single-axle tipper.

- Robust construction
- Flexibel use
- Tailor made
- Made in Austria

Smooth. Absolutely.

Platform made of one piece of 4 or 5 mm steelplate.
Folded at four sides.

High up. With ease.

Particularly strong, hard chromed,
gimbaled telescopic cylinder.

Corrosion protection.

A whole life.

The ACC coating, in combination with the 2-component acrylic paint spray finish, ensures high-quality corrosion protection (truck quality).

Incomparable frame.

For sure.

Robot-welded press profile frame for the greatest possible stability and tipping safety as well as the best driving behavior
10 year warranty on chassis frame at agricultural use.

Perfektly balanced.

Ball tilt bearing for safe unloading in each terrain.



Technical data

MODEL	E 2520 R	E 3524	E 4530	E 6030 EURO-LINE	E 6035 EURO-LINE	E 6535 EURO-LINE	E 6040	E 8041
Permissible gross weight (kg)	2.500	3.500	4.500	6.000	6.000	6.500	6.000	8.000
Dead weight (kg)	640	850	1.150	1.190	1.220	1.220	1.950	1.980
Support weight (kg)	500	600	900	900	1.000	1.000	1.000	1.100
Load capacity (m³)	1	1,4	2	2	3	3	8	8
Platform size inside (mm)	2.050 x 1.210/1.240	2.380 x 1.430	2.930 x 1.830	2.930 x 1.830	3.430 x 1.830	3.430 x 1.830	4.070 x 2.080	4.070 x 2.080
Steel sideboards (mm)	400	400	400	400	500	500	500	500
Steel attachment boards (mm)	-	-	-	-	-	-	500	500
Standard tyres	10.0/75 - 15.3 (10)	10.0/75 - 15.3 (10)	10.0/75 - 15.3 (10)	11.5/80 - 15.3 (10)	11.5/80 - 15.3 (10)	15.0/55 - 17 (10)	15.0/55 - 17 (10)	355/60 R 18 MPT (16)
Platform height at standard tyres (mm)	930	920	920	970	980	980	1.020	1.040
Track (mm)	1.000	1.150	1.470	1.470	1.470	1.470	1.550	1.550
Cylinder stroke (mm)	600	800	1.000	1.000	1.200	1.200	1.400	1.400
Number of cylinder and tube sections	1x2	1x4	1x3	1x3	1x3	1x3	1x3	1x3
Cylinder diameter	60/75	45/60/75/90	60/75/90	60/75/90	60/75/90	60/75/90	60/75/90	75/90/105
Requested amount of oil (l)	2,5	3	5	5	6	6	6,5	10
Tilt angle lateral/rear (°)	-/50	45/45	45/46	45/46	45/46	45/46	45/45	45/45



On the road. Offroad.

Outstanding handling characteristics and extreme stability when tilting characterize our tandem vehicles.

Tandem-axle tipper

Tandem vehicles are made for on the road or offroad. At BRANTNER we offer excellent handling characteristics, the use of high support weight, low heights and spring support on each axle. You have the advantage of being able to choose from a huge variety of types from 8 to 24 tons total weight.

01 TA 20051/2 XXL

optionally with Multiplex or Stabilator body

02 TA 23061/2 XXL

alle models optionally with tarpaulin body

03 TA 18045/2 XXL

different dimensions of tyres are available

04 TA 14045/2 XXL

standard with 600 mm steel sideboards and 600 mm attachment boards

05 TA 10041

standard with 500 mm steel sideboards and 500 mm attachment boards



Smooth.
Absolutely.
Platform made of one piece of 4 or 5 mm steelplate.
Folded at four sides.

High up.
With ease.
The gimbal-mounted hard chromed tilting cylinders in combination with far outbound tilting bearings guarantee stability in every situation.

Incomparable frame.
For sure.
Robot-welded press profile frame for the greatest possible stability and tipping safety as well as the best driving behavior
10 year warranty on chassis frame at agricultural use.

BRANTNER- Tandem-axle tipper.

- Ruhige Laufeigenschaften
- Extrem Standsicher
- Maßgeschneidert
- Made in Austria

Corrosion protection.
A whole life.
The ACC coating, in combination with the 2-component acrylic paint spray finish, ensures high-quality corrosion protection (truck quality).

The strenght is to be found in serenity.
The calm driving characteristics are guaranteed by the sprung tandem unit with swing compensation. Additionally the low construction is an advantage too.

The best for last.
Completely closed frame end as stable underride guard incl. far outward lying ball tilt bearing.

Stable.
The trapezoidal tilting frame offers enormous stability with low weight. Thanks to V and C profiles made in Austria.

Technical data

MODEL	TA 8040	TA 10041	TA 8045 XXL	TA 11045 XXL	TA 14045 XXL	TA 14045/2 XXL	TA 18045/2 XXL	TA 18051/2 XXL	TA 20051/2 XXL	TA 23061/2 XXL
Permissible gross weight (kg)	8.000	10.190	8.000	11.000	13.900	13.900	18.000	18.000	20.000	20.500 (techn. 24.000)
Dead weight (kg)	2.050	2.190	2.580	2.750	3.100	3.300	3.800	4.480	4.640	6.000
Support weight (kg)	1.000	1.450	1.000	1.450	1.700	1.700	2.000	1.700	2.000	2.500
Load capacity (m ³)	8,5	8,5	9,9	9,9	11,8	11,8	11,8	19,3	19,3	23
Platform size inside (mm)	4.070 x 2.080	4.070 x 2.080	4.480 x 2.150/2250	4.480 x 2.150/2.250	4.480 x 2.150/2.250	4.480 x 2.150/2.250	4.480 x 2.150/2.250	5.080 x 2.340/2.410	5.080 x 2.340/2.410	6.050 x 2.340/2.410
Steel sideboards (mm)	500	500	500	500	600	600	600	800	800	800
Steel attachment boards (mm)	500	500	500	500	600	600	600	800	800	800
Standard tyres	11.5/80 - 15.3 (10)	15.0/55 - 17 (10)	15.0/55 - 17 (10)	15.0/55 - 17 (10)	355/60 R 18 MPT (16)	355/60 R 18 MPT (16)	445/45 R 19.5 neu Truck Barkley	385/65 R 22.5 retreated	385/65 R 22.5 retreated	385/65 R 22.5 retreated
Platform height at standard tyres (mm)	1.080	1.060	1.100	1.100	1.080	1.080	1.110	1.360	1.360	1.450
Track (mm)	1.550	1.550	1.800	1.800	1.800	1.800	1.800	2.000	2.000	2.150
Cylinder stroke (mm)	1.400	1.400	1.800	1.800	1.800	1.600	1.800	1.800	1.800	2.000
Number of cylinder and tube sections	1x3	1x3	1x4	1x4	1x4	2x4	2x4	2x4	2x4	2x4
Cylinder diameter	75/90/105	75/90/105	60/75/90/105	75/90/105/120	75/90/105/120	60/75/90/105	60/75/90/105	75/90/105/120	75/90/105/120	75/90/105/120
Requested amount of oil (l)	10	10	11	15	15	20	22	28	28	37
Tilt angle lateral/rear (°)	45/45	45/45	45/49	45/49	45/49	45/45	45/49	45/49	45/49	45/>50





Tandem low loader

- Trailer drawbar height adjustable about 300 mm by means of a spindle
- BRANTNER rectangular frame made of C-profiles with stable underride guard with slide-in channels for aluminum ramps (for 3.2 m length or 3.75 m length for TA 20051 XXL low loader)
- Lashing eyes according to EN 1264 sunk in the ground (8 pieces)
- Steel plate platform 5 mm, patented selfcleaning platform edge
- Tandem axles with leaf suspension - springs mounted under the axles
- V-trapezoidal tilting frame with additional stiffening plates
- additional lashing eyes on all 4 corners and the front wall for even more flexibility (special equipment at TA 20051 XXL low loader)
- Swing wall left, right and rear with central locking lever and locking hook, for easy pulling up steel sideboard

Technical data



	TA 11045 TL	TA 13045 TL	TA 20051 XXL TL
Permissible gross weight (kg)	11.000	13.000	20.000
Dead weight (kg)	2.600	3.000	4.500
Load capacity (m³)	5,3		7,3
Support weight (kg)	1.000		2.000
Platform size inside (mm)	4.480 x 2.410		5.080 x 2.410
Total length (mm)	6.330		6.900
Total width (mm)	2.550		
Coupling height (mm)	700 - 1.000		740 - 850
Steel sideboards (mm)	500		600
Track (mm)	1.950		2.000
spring distance (mm)	1.400		1.280
Axle cross section (mm)	80		120 (tube)
Platform height at standard tyres (mm)	960	1.030	1.100
Standard tyres	215/75 R 17,5 (18)	355/60 R 18 MPT (16)	385/55 R 19,5 new
Axle distance (mm)	990	1.010	1.360
Cylinder diameter (mm)	75/90/105/120 - 1.600		90/105/120/140/160 - 1.800
Tilt angle (°)	45/45		
Requested amount of oil (l)	12,6		24

Threeside tipper. Low loader.

The already extensive standard equipment can be extended for every purpose.
Design your individual trailer.

**On top.
With ease.**

Aluminum ramps protected against contamination in the chassis frame.

**Corrosion protection.
A whole life.**

The ACC coating, in combination with the 2-component acrylic paint spray finish, ensures high-quality corrosion protection (truck quality).

**High up.
With ease.**

Particularly strong, hard chromed, gimbaled telescopic cylinder.

**Smooth.
Absolutely.**

Selfcleaning platform made of one piece of 5 mm steelplate.
Folded at four sides.

Special equipment

- steel plate platform made of high strength special steel (Hardox, Quard, or similar)
- various body variants
- platform extension
- various tyre dimensions
- and a lot more ...



- 01 Aluminum ramps protected against contamination in the Chassis frame stored
- 02 40, 60 or 80 km/h version
- 03 Foldable supports in the back
- 04 Toolbox
- 05 Support winch with 2-speed (optional also support wheel with angular gear or hydraulic support leg), Bucket and broom holder, towing facility - height adjustable by means of a spindle
- 06 BRANTNER-sideboard stiffening

Individual.
As you.

Additional equipment such as folding frames, eyelets for lashing straps, removable stop gates and much more make your platform trailer an individualist.

Platform trailer

At Brantner, we can respond flexibly to individual customer requirements thanks to our enormous variety of types.

Platform trailers are available as two-axle, tandem or three-axle vehicles. Low construction, the steel platform - made of one piece and folded to all four sides - as well as individually determined platform lengths and platform widths are our hallmarks in the area of platform trucks.

01 DPW 18000 Edition

three-axle platform trailer with standard folding frame for round bale transport and a platform extension of 900 mm

02 TPW 20000

special platform length of 9,000 mm in combination with optional front and rear wall, special painting optionally in white aluminum

03 ZPW 13000

optional stop gates for box transport safety and optional front attachment walls available

04 ZPW 12000

standard eyelets for lashing straps in lateral plateau



01



02



03



04

27

26

BRANTNER- Platform trailer.

- Standard with lashing options
- Tailor made
- Made in Austria

In the long run it matters.

The optional 900 mm platform extension provides more field flexibility.

Corrosion protection.

A whole life.

The ACC coating, in combination with the 2-component acrylic paint spray finish, ensures high-quality corrosion protection (truck quality).

Safety first.

The all-round holes in the plateau edging provide support for lashing straps for safety cargo transport.

Made in one piece.

The steel platform, made of one piece without any annoying weld seams, folded right-angled on all four sides, guarantees enormous stability.

Goes deep.

Who wants to go high.

The extra low construction offers enormous advantages in everyday work.

Trim levels.

According to your wishes.

Versatile accessories, such as the folding frame for round bale transports, make the platform trailer a universally applicable working tool.

Technical data

MODEL	ZPW 8000	ZPW 11000	ZPW 12000 Edition	ZPW 13000	ZPW 18000	DPW 18000 Edition
Permissible gross weight (kg)	8.000	11.000	12.000	13.000	18.000	18.000
Dead weight (kg)	1.850	2.020	3.300	2.340	4.500	3.000
Platform size (mm)	5.000 x 2.500	5.000 x 2.500	7.000 (+900) x 2.500	5.000 x 2.500	6.000 x 2.500	9.520 (+900) x 2.500
Total length (mm)	6.900	6.900	9.470	6.900	8.000	11.990
Total width (mm)	2.500	2.500	2.550	2.500	2.500	2.550
Track (mm)	1.920	1.950	1.950	1.950	2.000	1.950
Spring distance (mm)	1.250	1.250	1.250	1.250	1.400	1.250
Axle cross section (mm)	80	80	80	90	120 (tube)	80
Platform height (mm)	1.080	1.180	1.135	1.300	1.320	1.180
Standard tyres	11.5/80 - 15.3 (10)	12.5/80 - 18 (12)	15.0/55 - 17 (14)	385/65 R 22.5 Truck retreaded	385/65 R 22.5 Truck retreaded	500/50 - 17 (14) AW
Ball bearing race diameter (mm)	1.050	1.050	1.200	1.050	1.200	1.200



POWER-PUSH⁺

Enormous load capacity
combined with a short design
for extremely manoeuvrable
handling.
They will love it!

Push-off trailer

From 75 years of experience and over 125.000 produced vehicles, the new push-off vehicle POWER-PUSH plus⁺ was created with the help of state-of-the-art construction techniques.

The result of years of development and practical experience can be seen! The type variety ranges from 14 t to 34 t total weight.

01 TA 24080 PP plus⁺

standard with 24 t maximum permissible weight,
Steering axle with axial cross section 150 mm (tube) and 32 t spring unit

02 TA 23071 PP plus⁺

with optional installation height of 2.300 mm,
including an increase in the rear wall to 2.300 mm,
rear wall optionally also available with potato slide

03 TA 20055 PP plus⁺

construction height 2.000 mm standard,
standard with stable, hinged rear underride guard

04 TR 34080 PP plus⁺

2 rigid and 1 steering axles as standard, optionally with hydraulic suspension

POWER-PUSH plus⁺

- ⊕ Payload.
- ⊕ Domestic equipments.
- ⊕ Variety of types.
- ⊕ Quality.
- ⊕ Stability.
- ⊕ Flexibility.



Corrosion protection.

A whole life.

The ACC coating, in combination with the 2-component acrylic paint spray finish, ensures high-quality corrosion protection (truck quality).

Incomparable frame.

For Sure.

An extremely strong chassis frame made of double C-profiles. Quality from Austria with 10 years warranty on chassis frame at agricultural use.

Smooth.

Absolutley.

The absolutely smooth STABILATOR walls for low wear of the seals.

**BRANTNER-
Push-off trailer.**

- extremely agile
- low dead weight
- Load capacity from 20 to 49 m³
- Made in Austria



**Forward.
With ease.**

2 or 3 hard-chrome double-acting cylinders mounted in front of the trough for optimum utilization of the cargo space.

Bombs stuck.

The stable STABILATOR walls withstand any load and that even without a tension rod.

No space.

Doesn't matter.

Due to the short design and the special construction extremely agile.

Flexible variants

Both the spreader and the overload skrew can be easily mounted to the rear wall of your push-off trailer.

Spreader. Made by Kirchner.

- Spreader rolls made of thick-walled, seamless steel tubes
- Milling tines made of Hardox
- Individually dynamically balanced spreading rollers for optimum smoothness and a long service life
- Closed frame top - no dirt deposit
- Drive via oil bath gear for each individual spreading roller
- Walterscheid cardan shafts with camshift and one-way clutch
- Central, easily accessible lubrication bar

Technical data

- Passage height: 2.300 mm
- Spinner diameter: 1.100 mm
- Spreading width: max. 12 m

overload skrew

- for the grain harvest
- Overload tube hydraulically foldable
- easy installation on all PP+ types



In use.
Easy.

The strong double-C profile chassis frame and the standard hydraulic rear panel make every job a breeze.



Technical data

MODEL	TA 14055 PP+	TA 16055 PP+	TA 20055 PP+	TA 23071 PP+	TA 24080 PP+	TR 34080 PP+	TR 34090 PP+
Permissible gross weight (kg)	14.000	16.000	20.500 / 21.000	20.500 / 24.000	24.000	34.000	34.000
Dead weight (kg)	5.800	5.900	6.100	7.200	8.500	9.100	10.100
Load capacity (m ³)	Body 1.500 mm: 20 m ³ Body 2.000 mm: 26 m ³	Body 1.500 mm: 20 m ³ Body 2.000 mm: 26 m ³	Body 1.500 mm: 20 m ³ Body 2.000 mm: 26 m ³ Body 2.300 mm: 30 m ³	Body 2.000 mm: 34 m ³ Body 2.300 mm: 40 m ³	Body 2.000 mm: 38 m ³ Body 2.300 mm: 44 m ³	Body 2.000 mm: 38 m ³ Body 2.300 mm: 44 m ³	Body 2.000 mm: 43 m ³ Body 2.300 mm: 49 m ³
Support weight (kg)	2.000	2.000	2.500 / 3.000	2.500 / 4.000	4.000	4.000	4.000
Trough size inside incl rear wall (mm)	5.500 x 2.380 x 1.500	5.500 x 2.380 x 1.500	5.500 x 2.380 x 2.000	7.100 x 2.380 x 2.000	8.000 x 2.380 x 2.000	8.000 x 2.380 x 2.000	9.000 x 2.380 x 2.000
Total length (mm)	7.300	7.300	7.300	9.000	10.000	10.000	11.000
Total width (mm)	at body 2.550	at body 2.550 at tyres max. 3.000	at body 2.550 at tyres max. 3.000	at body 2.550 at tyres max. 3.000	at body 2.550 at tyres max. 3.000	at body 2.550 at tyres max. 3.000	at body 2.550 at tyres max. 3.000
Standard tyres	500/50 - 17 (14) AW	385/65 R 22.5 Truck retreaded	385/65 R 22.5 Truck retreaded	385/65 R 22.5 Truck retreaded	550/60 - 22.5 (16) new Profil I	560/60 R 22.5 161 D Agri Radial Mitas	560/60 R 22.5 161 D Agri Radial Mitas
Coupling height (mm)	420 - 930	350 - 1.000	350 - 1.000	420 - 1.060	500 - 1.150	500 - 1.150	500 - 1.150
Track (mm)	1.950	2.000	2.000	2.000	2.250	2.250	2.250
Spring distance (mm)	1.040	1.040	1.040	1.040	front: 1.040 rear: 820	front: 1.040 rear: 820	front: 1.040 rear: 820
Axle cross section (mm)	90 mm	120 mm	120 mm	120 mm	150 mm	150 mm	150 mm
Brake (mm)	350 x 90	400 x 120	400 x 120	400 x 120	420 x 180	420 x 180	420 x 180
Platform height (mm)	1.240	1.350	1.350	1.470	1.550	1.550	1.550
Axle distance (mm)	1.010	1.360	1.360	1.360 / 1.600 (steering axle)	1.800	1.800	1.800
Cylinder diameter	100/70 100/70	100/70 100/70	100/70 100/70	110/70 100/70	110/70 100/70	110/70 100/70	110/70 100/70
Requested amount of oil (l)	16 (incl. rear wall opening)	16 (incl. rear wall opening)	16 (incl. rear wall opening)	22 (incl. rear wall opening)	27 (incl. rear wall opening)	27 (incl. rear wall opening)	30 (incl. rear wall opening)
Max. operating pressure (bar)	200	200	200	200	200	200	200

Two-axle tipper

Increasing transportation demands in modern agriculture need efficient solutions. A maximum utilisation of total weight at public roads can be achieved by tipper trains.

A calm road performance, an efficient use of loading capacity and high authorized speed are essential.

Brantner realises all these criteria by a wide product range from 8 to 24 tons total weight.

01 Z 18051/G & Z 18051/2 XXL

standard with extreme stable double-C-profile chassis frame, optional with tarpaulin body available

02 Z 8045 XXL

standard with overrun brake and attachment boards 500 mm

03 Z 13045 XXL

optional with different dimensions of tyres

04 ZZ 18050

with automatic sideboard opening



Entry into professional level.

Proven BRANTNER professional quality at an introductory price. This distinguishes the Z 18051/G from the big brother Z 18051/2 XXL.

MODEL	Z 18051/G	Z 18051/2 XXL
Chassis frame	closed/welded double-C profile chassis frame (high torsion stiffness)	
Tipping cylinder (amount)	1	2 (extremely stable)
Steel plate platform (mm)	4	5
Towing facility	80 mm profile (18 t)	100 mm profile (26 t)
Closures at corner stanchions	Hestal	HB lorry-closures
Sideboard lifting springs	optional 1 pc	optional 2 pcs
Sideboard stiffening	optional	standard
Lightning	Multipoint	Europoint II
Mudguard	mud protection at mudguards	mud protection over entire width

BRANTNER- threesidetipper.

- calm driving behavior
- perfect for driving in train
- custom tailored
- Made in Austria

Corrosion protection.

A whole life.

The ACC coating, in combination with the 2-component acrylic paint spray finish, ensures high-quality corrosion protection (truck quality).

Smooth.

Absolutely.

One-piece steel plate platform in 4 or 5 mm thickness.

Folded on all four sides.

Stable.

The far outboard ball bearings guarantee stability in every situation.

Incomparable frame.

For sure.

Robot-welded press profile frame for the greatest possible stability and tipping safety as well as the best driving behavior
10 year warranty on chassis frame at agricultural use.

High out.

With ease.

Particularly strong, hard chromed, gimbaled telescopic cylinder.

In the circle.

With ease.

The Y-drawbar allows tight curve radii even in tight spaces.

Technical data

MODEL	ZZ 18050	ZZ 18060	Z 8045 XXL	Z 11045 XXL	Z 13045/2 XXL	Z 15051/2 XXL	Z 18045/2 XXL	Z 18051 G	Z 18051/2 XXL
Permissible gross weight (kg)	18.000	18.000	8.000	11.000	13.000	15.000	18.000	18.000	18.000
Dead weight (kg)	4.500	5.500	2.640	2.790	3.600	3.860	4.300	4.400	4.500
Loading capacity (m ³)	16,5	20,6	10,0	12,1	12,1	13,6	17,3	17,1	19,6
Platform size inside (mm)	4.965 x 2.380	5.930 x 2.380	4.480 x 2.250	4.480 x 2.250	4.480 x 2.250	5.040 x 2.250	4.480 x 2.410	5.080 x 2.410	5.080 x 2.410
Total length (mm)	7.050	8.100	6.550	6.550	6.550	7.060	6.600	7.200	7.200
Total width (mm)	2.550	2.550	2.420	2.470	2.470	2.470	2.550	2.550	2.550
Steel sideboards (mm)	600	600	500	600	600	600	800	800	800
Steel attachment boards (mm)	800	800	500	600	600	600	800	600	800
Standard tyres	385/65 R 22.5 truck retreaded	385/65 R 22.5 truck retreaded	12.5/80 - 18 (12)	12.5/80 - 18 (12)	385/65 R 22.5 truck retreaded	385/65 R 22.5 truck retreaded	385/65 R 22.5 truck new	385/65 R 22.5 truck retreaded	385/65 R 22.5 truck new, Windpower or similar
Track (mm)	2.000	2.000	1.800	1.800	1.800	1.800	2.000	2.000	2.000
Spring distance (mm)	1.400	1.400	1.150	1.150	1.150	1.250	1.400	1.400	1.400
Axle cross section (mm)	120 (tube)	120 (tube)	70	70	90	90	120 (tube)	120 (tube)	120 (tube)
Platform height (mm)	1.370	1.370	1.270	1.270	1.380	1.380	1.370	1.370	1.370
Ball bearing race (mm)	1.200	1.200	1.050	1.050	1.050	1.050	1.200	1.200	1.200
Cylinder stroke (mm)	1.600	1.400	1.600	1.600	1.600	1.600	1.600	1.800	1.600
Number of cylinder and tube sections	1x4	2x3	1x3	1x3	2x4	2x3	2x3	1x3	2x3
Cylinder diameter	75/90/105/120	75/90/105	75/90/105	75/90/105	60/75/90/105	75/90/105	75/90/105	90/105/120	75/90/105
Tilting angle lateral/rear (°)	45/-	45/-	45/45	45/45	45/46	45/43	45/48	45/49	45/43
Requested amount of oil (l)	13	16	12,6	12,6	13,5	23	23	16	23



Size. Irreplaceable.

24 to 32 tons permissible gross weight paired with the advantages of a three-side tipper.
The ideal companion for the big tasks.

01

Three- and four-axle tipper

Our three- and four-axle tipper offer enormous payload with the highest possible flexibility. Standard equipment such as the hydraulic rear axle support or the heavy-duty ball bearing race offer maximum comfort and the stability and quality we stand for.

01 DD 24073 XXL

optionally with lateral or rear turnips slide, optionally with hydraulic swing wall release.

02 VD 32080/2

strong heavy duty ball race and last axle as follower steering axle as standard



02

MODEL	DD 24073 XXL	VD 32080/2
Permissible gross weight (kg)	24.000	32.000
Dead weight (kg)	7.200	9.000
Load capacity (m ³)	27,9	30,6
Platform size inside (mm)	7.230 x 2.410	7.930 x 2.410
Steel sideboards (mm)	800	800
Steel attachment boards (mm)	800	800
Standard tyres	385/65 R 22.5 Truck retreaded	385/65 R 22.5 Truck retreaded
Platform height with standard tyres (mm)	1.420	1.460
Track (mm)	2.000	2.000
Cylinder stroke (mm)	3.000	3.000
Cylinder amount and tube sections	1x5	2x5
Cylinder diameter	90/110/125/145/165	75/90/105/120/140
Requested amount of oil (l)	43	58
Tilt angle lateral/rear (°)	45/48	45/47

46

47



POWER-TUBE.

The professional range for the successful farmer.
Troughs with a total weight of 8 to 34 tonnes offer the right solution for everyone.

Dumper

During silage, efficient transport is of particular importance. The requirements are clearly defined: simple operation, large load capacity and quick and easy loading and unloading. These qualities have always characterized our BRANTNER dumper. However, our Power-Tube is also ideal for all other agricultural applications due to the smooth inner walls and the standard hydraulic rear wall opening.

01 TA 23065/2 PT

optionally steel attachment boards 600 mm and steel grill across entire width

02 TR 34080/2 PT

from 27 to 41 m³ load capacity with optionally steel attachment boards 800 mm

03 TA 24080/2 PT

perfect comfort - the Mesh-Cover operated electrically for transport security

04 TA 24073 PT

maximum permissible gross weight of 24 tons with compact dimensions

05 TA 20053/2 PT

hydraulic rear wall opening can be operated with hinged steel attachment walls

06 TA 14045/2 PT

with two tilt cylinders for optimum stability

07 TA 18053/2 PT

standard hydraulic rear wall opening with automatic-mechanical pick-up hook



48

02



03



04



05



06



07

POWER-TUBE Dumper.

- calm driving behavior
- smooth inner walls
- absolut stable
- standard hydraulic rear wall opening

Corrosion protection.

A whole life.

The ACC coating, in combination with the 2-component acrylic paint spray finish, ensures high-quality corrosion protection (truck quality).

Smooth.

Absolutely.

Barrel-edged side walls with an absolutely smooth inner surface.

High up.

With ease.

Tilting frame with additional stiffeners in longitudinal beams for maximum stability.

Flap up.

The grain-tight rear wall with automatic-mechanical pressure hooks.

Tilt.

Safety.

The far outboard tilting bearings guarantee stability in every situation.

Incomparable frame.

With ease.

Press profile frame for the greatest possible stability and tipping safety as well as the best driving behavior
10 year warranty on chassis frame at agricultural use.

Trough.

Extreme stable, folded from one piece, conical trough mad of 4 mm steel plate by means of foil seam fusion.

Technical data

MODEL	E 8045 PT	E 11045 PT	TA 8045 PT	TA 11045 PT	TA 14045/2 PT	TA 18045/2 PT	TA 18053/2 PT	TA 20053/2 PT	TA 23065/2 PT	TA 24073 PT	TA 24080/2 PT	TR 34080/2 PT	
Permissible gross weight (kg)	8.000	11.000	8.000	11.000	13.900	18.000	18.000	20.000	20.500 (technical 24.000)	24.000	24.000	34.000	
Dead weight (kg)	2.900	3.100	3.500	3.700	3.800	4.250	4.860	4.960	6.100	7.220	7.860	9.100	
Load capacity (m ³)	15,4 - 21,5	15,4 - 21,5	15,4 - 21,5	15,4 - 21,5	15,4 - 21,5	15,4 - 21,5	17,9 - 25	17,9 - 25	22,0 - 33,6	24,4 - 37,4	27,0 - 41,0	27,0 - 41,0	
Support weight (kg)	1.000	1.800	1.000	1.450	1.500	2.000	1.700	2.000	2.500	4.000	4.000	4.000	
Platform size inside l x b x h (mm)	4.550 x 2.230/2.280 x 1.500	4.550 x 2.230/2.280 x 1.500	4.550 x 2.230/2.280 x 1.500	4.550 x 2.230/2.280 x 1.500	4.550 x 2.230/2.280 x 1.500	4.550 x 2.230/2.280 x 1.500	4.550 x 2.230/2.280 x 1.500	5.300 x 2.230/2.280 x 1.500	5.300 x 2.230/2.280 x 1.500	6.500 x 2.230/2.280 x 1.500	7.300 x 2.180/2.280 x 1.500	8.000 x 2.180/2.280 x 1.500	8.000 x 2.180/2.280 x 2.410
Total length (mm)	6.400	6.400	6.400	6.380	6.380	6.380	7.000	7.000	8.140	9.300	10.000	10.000	
Total width (mm)	2.550	2.550	2.550	2.550	2.550	2.550	2.550	2.550	2.550/3.000	up to 3.000	up to 3.000	2.550 / 3.000	
Coupling height (mm)	AUT: 780 - 890 GER: 900	800 - 910	860	600 - 710 adjustable	600 - 710 adjustable	600 - 710 adjustable	400 - 1.000 adjustable	400 - 1.000 adjustable	400 - 1.000 adjustable	370 - 670 adjustable	370 - 670 adjustable	580 - 720 adjustable	
Standard tyres	355/60 R 18 MPT (16)	385/65 R 22.5 Truck retreaded	15.0/55 - 17 (10)	355/60 R 18 MPT (16)	355/60 R 18 MPT (16)	445/45 R 19.5 Truck new Barkley	385/65 R 22.5 Truck retreaded	385/65 R 22.5 Truck retreaded	385/65 R 22.5 Truck retreaded	550/60 - 22.5 (16)	550/60 - 22.5 (16)	560/60 R 22.5 Agri Radial Mitas 161 D	
Track (mm)	1.800	1.800	1.800	1.800	1.800	2.000	2.000	2.000	2.150	2.250	2.250	Ö: 2.000 / D: 2.250	
Axle cross section (mm)	70	90	70	70	90	120 (tube)	120 (tube)	120 (tube)	120 (tube)	150 (tube)	150 (tube)	150 (tube)	
Platform height (mm)	1.170	1.200	1.140	1.100	1.100	1.110	1.360	1.360	1.340	1.520	1.520	1.600	
Cylinder stroke (mm)	1.800	1.800	1.800	1.800	1.800	1.800	1.800	1.800	2.000	3.000	3.000	3.000	
Number of cylinder and tube sections	1x4	1x4	1x4	1x4	2x4	2x4	2x4	2x4	2x4	1x5	2x5	2x5	
Cylinder diameter	60/75/90/105	75/90/105/120	60/75/90/105	75/90/105/120	60/75/90/105	60/75/90/105	75/90/105/120	75/90/105/120	75/90/105/120	90/110/125/145/165	75/90/105/120/140	75/90/105/120/140	
Tilt angle rear (°)	50	50	50	50	50	50	50	50	50	> 50	> 50	> 50	
Requested amount of oil (l)	11	15	11	15	21	21	28	28	37	43	58	58	

Heavy load dumper

If the standard equipment not only meets requirements but also exceeds expectations, then our BRANTNER tippers are ready for the market. Our strict production conditions ensure that our tippers keep what "Made in Austria" promises.

X Power Tube

- Trough made of 6 mm sheet steel, optionally made of high-strength QUARD, HARDOX or similar special steel
- Trough conical, side walls barrel-shaped folded
- Hydraulic rear wall as standard, mechanically locked, guaranteed grain tight, without slide
- 2 pieces of hard chromed lifting cylinders, cardanic mounting
- hydraulic support leg
- optional with attachment boards for more load capacity



Halfpipe

- Halfpipe trough made of 6 mm high-strength QUARD, HARDOX or similar special steel
- Trough conical, side walls half round folded
- Rear wall mechanically locked and oscillating mounted or alternatively hydraulic rear wall opening with pendulum function
- hard chromed front cylinder
- hydraulic support leg
- lateral mudguards



Nothing too heavy.

The hard chromed front cylinder braces every challenge.



BRANTNER- Halfpipe.

- Robust construction
- Flexible use
- Tailor made
- Made in Austria

**Placed higher.
Simply more ground clearance.**
The hydraulic support leg with
600 mm optimally positioned.

**High out.
With ease.**
Strong, hard chromed
telescopic cylinder
for extra high lifting power.

**Incomparable frame.
For sure.**
Robot-welded press profile frame
for the greatest possible stability and
tipping safety as well as the best
driving behavior.

**Corrosion protection.
A whole life.**
The ACC coating, in combination
with the 2-component acrylic paint
spray finish, ensures high-quality
corrosion protection (truck quality).

Perfektly balanced.
Extra wide tilting bearing distance
for maximum stability when tilting
backwards.



Technical data

MODEL	TA 20053 HALFPIPE	TR 34072 HALFPIPE	TA 22053/2 X POWER-TUBE	TA 22062/2 X POWER-TUBE
Permissible gross weight (kg)	20.000 (technical 24.000)	34.000	22.000	22.000 (techn. gross weight 24.000)
Dead weight (kg)	5.750	8.500	4.960	6.100
Load capacity (m ³)	13,0	18,0	11,9 - 19,0	14,0 - 25,0
Support weight (kg)	2.000 - 4.000	4.000	4.000	4.000
Platform size inside l x b x h (mm)	5.300 x 2.250/2.300 x 1.200	7.200 x 2.250/2.300 x 1.200	5.300 x 2.230/2.280 x 1.000	6.200 x 2.230/2.280 x 1.000
Total length (mm)	7.400	9.200	7.000	8.140
Total width (mm)	2.550	2.550	2.550	2.550 / 3.000
Coupling height (mm)	400 - 800 adjustable	580 - 720 adjustable	400 - 1.000 adjustable	400 - 1.000 adjustable
Standard tyres	385/65 R 22.5 Truck retreaded	560/60 R 22.5 Agri Radial Mitas 161 D	385/65 R 22.5 Truck retreaded	385/65 R 22.5 Truck retreaded
Track (mm)	2.150	Ö: 2.000 / D: 2.250	2.000	2.150
Axle cross section (mm)	120 (tube)	150 (tube)	150 (tube)	150 (tube)
Platform height (mm)	1.150	1.520	1.300	1.340
Cylinder stroke (mm)	front cylinder 4.700	3.000	1.800	2.000
Number of cylinder and tube sections	1x4	2x5	2x4	2x4
Cylinder diameter	69/88/107/126	75/90/105/120/140	75/90/105/120	75/90/105/120
Tilt angle rear (°)	> 50	> 50	> 50	> 50
Requested amount of oil (l)	37	58	28	37

Tandem TA 20 Hook lift.

The new kind of flexibility! Whether for commercial or agricultural use, with the change system of hook lift you are ready.

Hook lift

- hydraulic container lock
- container length up to 7.000 mm
- operating unit can be mounted in the tractor by means of a magnetic base (optional)
- various tyre options
- standard hydraulic rear axle support and much more



MODEL	TA 20 Hakenlift
Permissible gross weight (kg)	20.000
Dead weight (kg)	5.300
Support weight (kg)	2.000
Container length (mm)	3.750 - 7.000
Standard tyres	385/65 R 22.5 Truck retreaded
Tip height at standard tyres (mm)	1.100
Track (mm)	2.000
Axle cross section (mm)	120 (tube)
Tilt angle rear (°)	50
Requested amount of oil (l)	27

Multiplex

Our multiplex models are equipped for every type of transport task. In combination with a fall sail, sensitive bulk materials such as potatoes can be gently loaded and transported. But even pallets can be ideally loaded and unloaded due to the standard portal doors. Due to the particularly stable construction of the side walls, a minimal deflection at maximum load can be achieved.

01 TA 20051/2 XXL Multiplex

The 1.560 mm high lateral side walls with middle stanchions are designed as portal door on one side, can also be swung. Operation is conveniently carried out by HB-Truck closures from the ground.

02 Z 18051/G Multiplex

The 18 mm thick, multi-layered multiplex panels together with low-wear rubber seals and the BRANTNER steel frame construction characterize the enormously stable side walls. The rear side wall is horizontally divided (900/660 mm) and can be swung.

03 TA 20051/2 XXL & Z 18051 G Multiplex

On train, the tandem and two-axle three-way tippers offer excellent driving behavior on road.

04 Z 18051/G Multiplex

Optionally, the multiplex is also available with lateral slide for optimal unloading of sensitive bulk material.



Stable & Flexible.

Standard portal doors allow the loading of loose bulk material as well as the loading of boxes.

MODEL	Z 18051 G Multiplex	TA 18051/2 XXL Multiplex	TA 20051/2 XXL Multiplex
Permissible gross weight (kg)	18.000	18.000	20.000
Dead weight (kg)	4.500	4.480	4.640
Support weight (kg)	-	1.700	2.000
Load capacity (m ³)	19,25	19,25	19,25
Platform size inside (mm)	5.110 x 2.415	5.110 x 2.415	5.110 x 2.415
Sideboards (mm)	1.560	1.560	1.560
Standard tyres	385/65 R 22.5 Truck retreaded	385/65 R 22.5 Truck retreaded	385/65 R 22.5 Truck retreaded
Platform height at Standard tyres (mm)	1.370	1.360	1.360
Track (mm)	2.000	2.000	2.000
Cylinder stroke (mm)	1.800	1.800	1.800
Number of cylinder and tube sections	1x3	2x4	2x4
Cylinder diameter	90/105/120	75/90/105/120	75/90/105/120
Requested amount of oil (l)	16	28	28
Tilt angle lateral/rear (°)	45/49	45/49	45/49

Stabilator body



■ Smooth inner walls - The decisive advantage

The absolutely smooth inner walls of the Stabilator body prevent the load from getting caught. In combination with the conical platform, perfect slipping is guaranteed. Cleaning after use is a piece of a cake.

■ Allround trailer

With appropriate attachment walls and a hydraulic rear wall, the tipper is a perfect all-round trailer. Even silage can be handled effortlessly.

■ Extreme stability

The system has also been developed for the transport of coarse gravel, demolition material and other heavy goods.

■ Various chassis frame variants

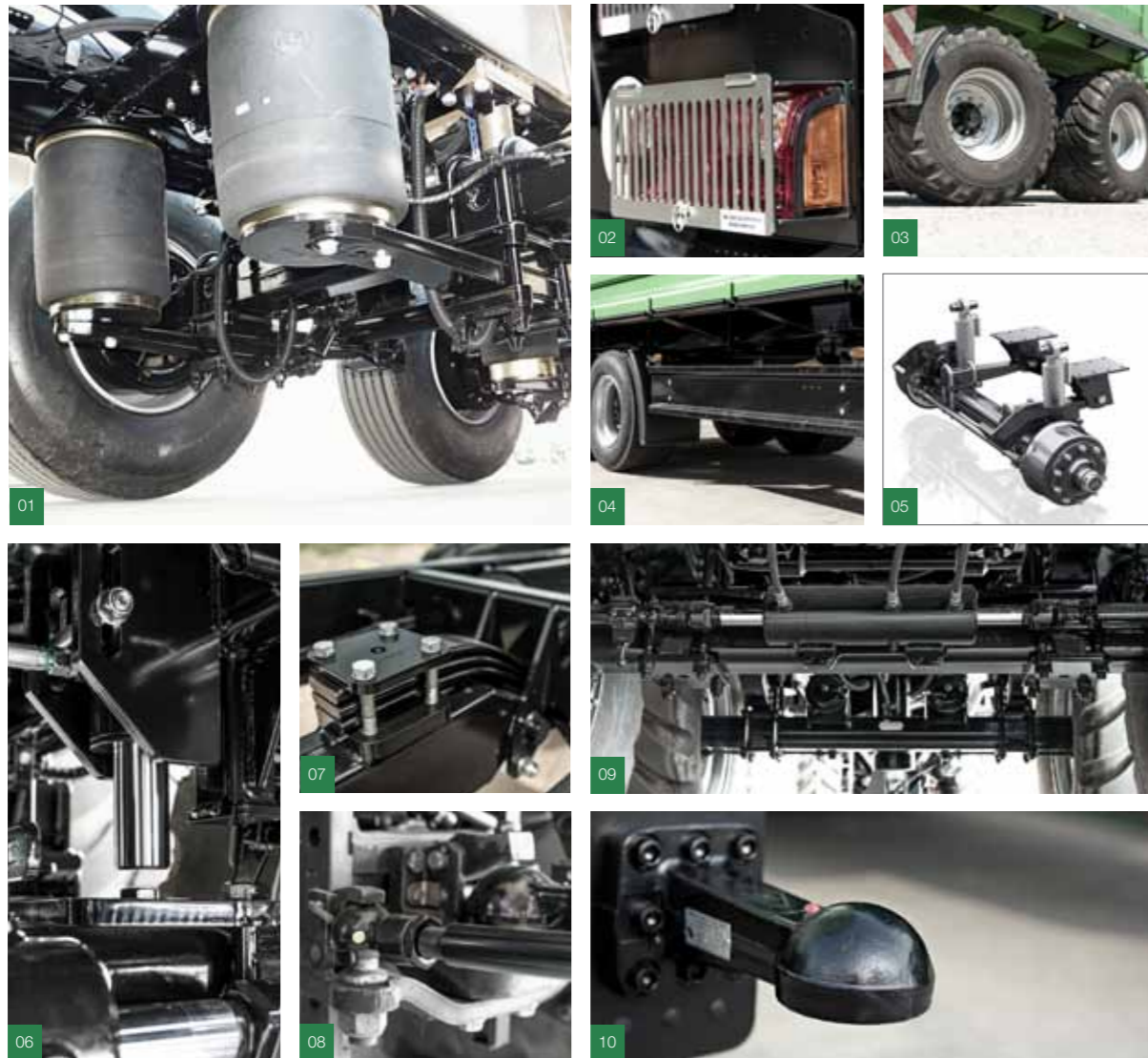
You decide on the vehicle MODEL of your choice and complete it with the Stabilator body. Whether two-axle, three-axle or tandem trailer. You can configure your individual trailer.

Flexibility & Stability.

- Threeside tipper with 3 mm steel sheet walls
- 1.500 mm high and absolutely smooth inner walls
- Stability of a dumper



Special equipment chassis



- 01 chassis with air suspension**
- 02 lamp protection**
reverseable
- 03 steering axle**
increases maneuverability and reduces tyre wear
- 04 underride guard**
lateral
- 05 hydraulic chassis**
chassis frame hydraulically suspended
- 06 hydraulic rear axle support**
combined with hydraulic rear wall

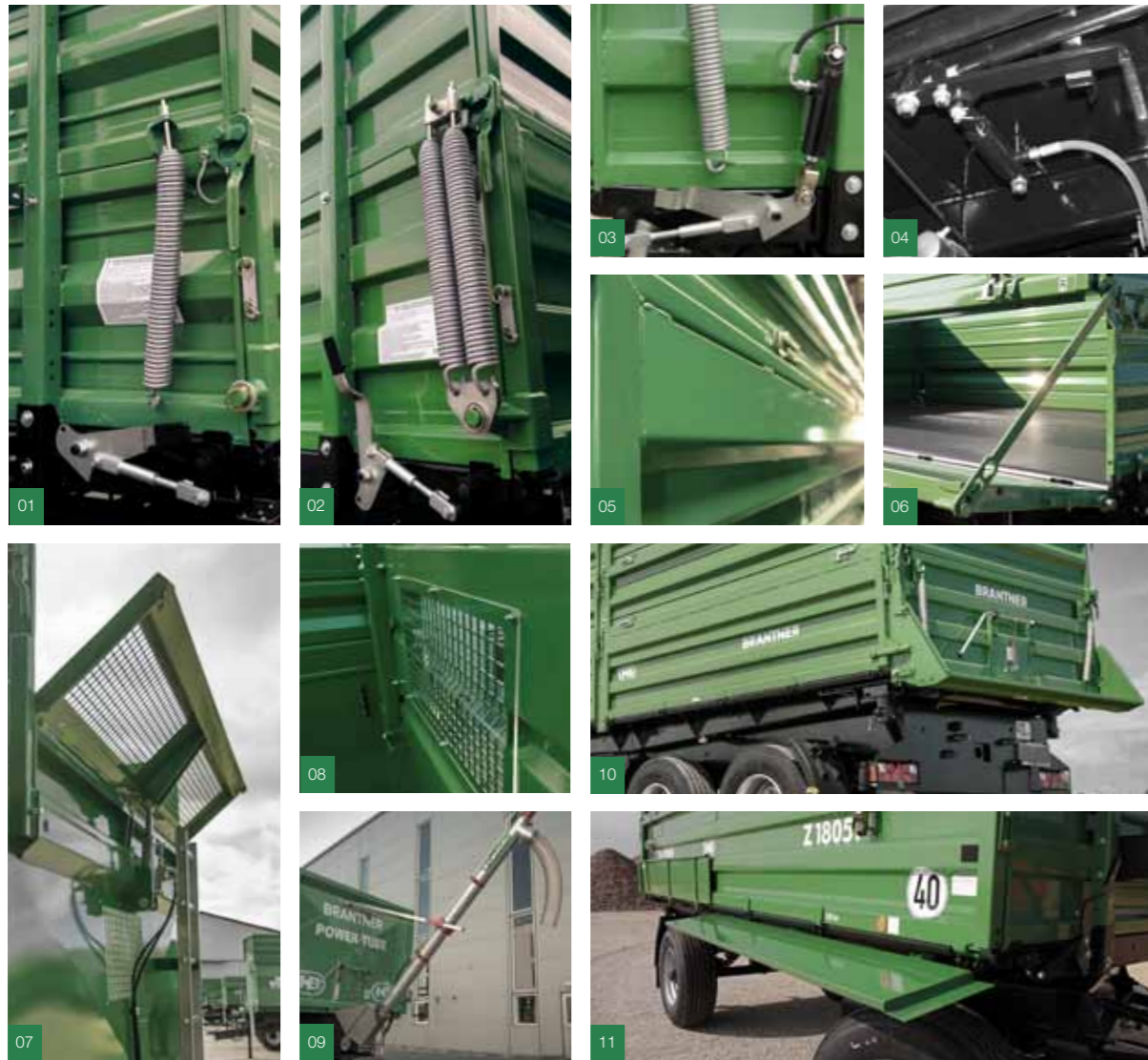
- 07 sprung towing bar**
three-layered parabolic spring
- 08 electrical or mechanical-hydraulic forced steering**
locking when pushing backwards or on road NOT required
- 09 self steering axle**
locking when pushing backwards or on road required
- 10 ball coupling K80**
for support weight from 2,5 up to 4 t



- 01 support wheel**
with angular gear
- 02 hydraulic support leg**
double acting, tube-in-tube guidance
- 03 shunting coupling**
rear
- 04 trailer coupling**
over 25 km/h, 8 t total weight
- 05 trailer coupling**
over 25 km/h, 15 t total weight
- 06 automatic trailer coupling**

- 07 support winch**
with 2-speed
- 08 high tipping facility**
with separate connector
- 09 sprung stabilizer**
for calm driving behaviour
- 10 toolbox**
mounted lateral, left or right
- 11 hydraulic rear wall opening**
120° made of profiles

Special equipment body



- 01 Sideboard lifting springs**
one piece each left and right
- 02 Sideboard lifting springs**
two pieces each left and right
(only with sideboards 800 mm possible)
- 03 hydraulic unlocking of swinging board**
lateral, left and right changeable
- 04 hydraulic unlocking of swinging board**
rear
- 05 sideboard stiffening**
left and right per set
- 06 Outrigger struts for lateral sideboards**
for lateral sideboards left and right (4 pcs)

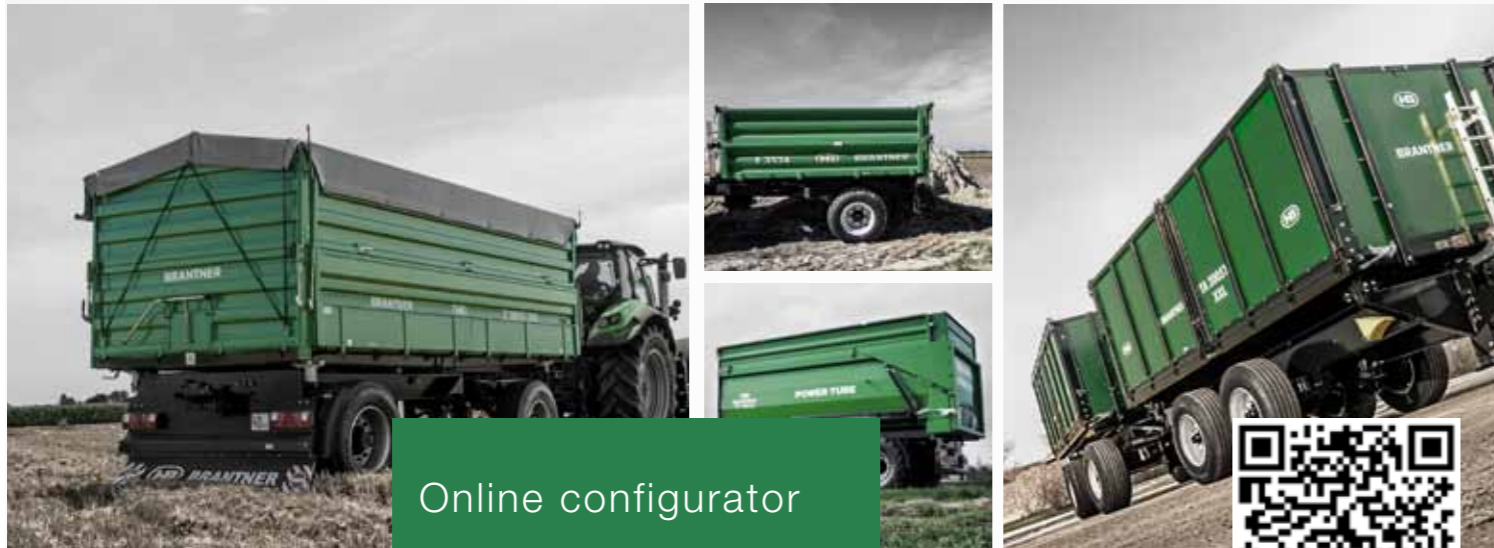
- 07 front wall**
hydraulically hingeable
- 08 steel grille**
on trough front wall or on top front board or over entire
width with acrylic glass cover
- 09 overload screw**
with rear or lateral tube
- 10 potato slide**
rear over entire width
- 11 stable slide lateral**
locked together with swing board



- 01 tarpaulin body**
with attachment triangles and operating platform
- 02 cabrio tarpaulin body**
hydraulically operated
- 03 push cover**
operated manually or electrically
- 04 mash cover**
operated electrically
- 05 hydraulic STABILATOR sidewall opening**
upwards, choose between left and right
- 06 Broom or shovel mounting**
vertical

- 07 discharge channel**
cannot be locked
- 08 discharge channel**
with additional fine dosing
- 09 hydraulic sideboard opening**
lateral 180°, can be opened and closed
- 10 Broom or shovel mounting**
horizontal

Configurator Online



Online configurator

- MODELdetails mit vielen Bildern und Videos
- Logik für Zusatzartikel
- Übersichtliches und individuelles Angebot



<https://www.hb-brantner.at/fahrzeugbau/en/produkte/produktuebersicht.html>



Choose Model

From the MODEL filter or from the filter for technical data, choose the MODEL that suits you best. You will then see all information about the selected vehicle on the product detail page. Under the menu item Configurator start the configuration.



Special equipment body

Configure your trailer with all possible combinations of additional equipment such as tarpaulin body, STABILATOR body or hydraulic rear wall opening.



Special equipment chassis

Configure your trailer with your personal combinations of additional equipment such as braking system, tyres, high-speed packages and so on.



Request a quote

You can conveniently download and print out your configuration as a PDF file or request an offer directly from our head office. We will get in contact with you shortly and create a proposal that is tailored to your wishes.

Contact



Head office

Hans Brantner & Sohn
Fahrzeugbau GesmbH
Hans Brantner-Straße 8
2136 Laa an der Thaya
T: +43 (0) 2522 2511-0
F: +43 (0) 2522 2511-50
fahrzeugbau@hb-brantner.at
www.hb-brantner.at

<https://www.hb-brantner.at/fahrzeugbau/en/contact/contact-sales.html>





Quality. Stability. Flexibility.



hb-brantner.at
brantner-hallenbau.at